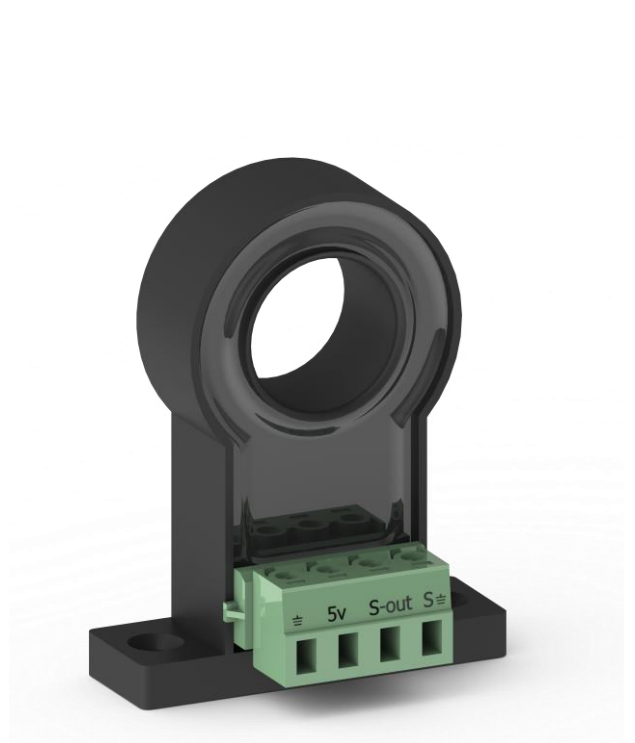




# Current Sensors



## Product Description

Used to measure both AC and/or DC currents, our current sensors provide accurate and stable current measurement up to 120 A or 31mT respectively. Our magnetic current sensors include either an integrated current rail in the package for low currents or measure the magnetic field of an external current rail for medium to high currents. The products are intended for use in 48 V, as well as high voltage and/or wide bandgap.

## Product highlights

Characteristics: high accuracy, reliable, rugged design with stainless steel housing, fast response time, lightweight housing, small size, customized housing, low pressure drop, universal use, automatically flow-turbine identification

Applications: automotive, mechanical engineering, apparatus engineering, aviation and aerospace, military, industrial applications, medical industry



<b>Performance<sup>1</sup></b>	
Dimensions	44.5 x 9 x 42.5 mm
Weight	46g
Supply voltage	5.0 V
Supply current	15mA
Quiescent Output Voltage	2.485 to 2.515 V (2.5 V Typical)
Operating temperature	-40 to 70° C (-40 to 158° F)
Operating humidity	5 to 95% Noncondensing
Mounting options	Screw Down or Din Rail Mountable
Enclosure materials	Flame Retardant ABS & Epoxy Potted
Sensing range	±0 to 100A
Accuracy	±0.1A
Output voltage range	0 - 5 V

